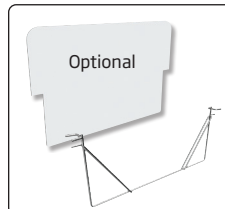
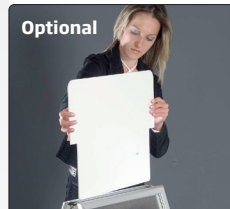
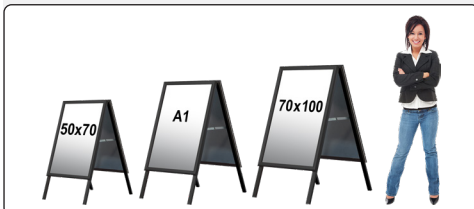
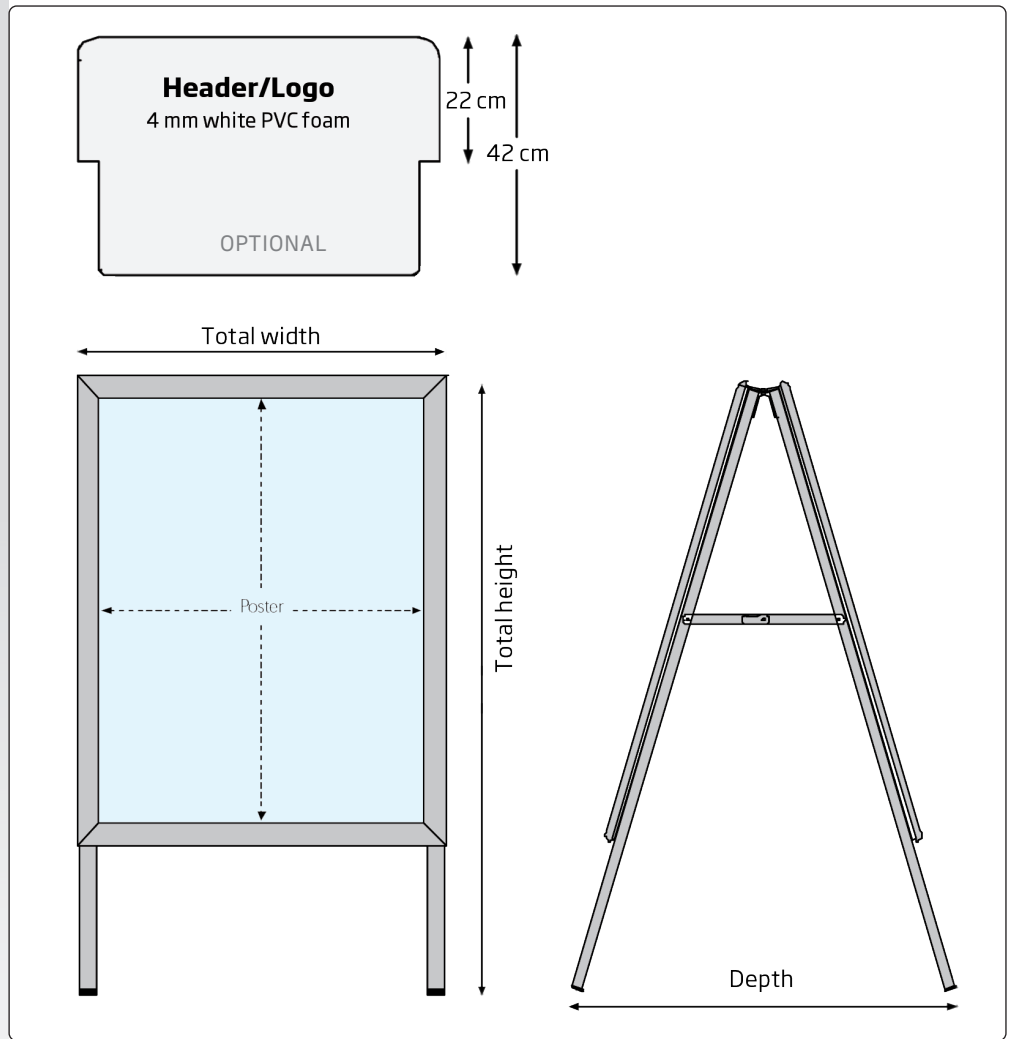




Produced in 32 mm alu snap-frames, mitred corners, galvanized steel back-sheets. Mounted on 15 x 30 mm square alu tubes. Non-corrosive. Anti-reflex APET front panels, included.

Strassenstände - 32 mm Alu Klapp-Rahmen, eloxierter Alu-profil, galvanisierte Stahlrückwand (unlackiert). Gestell in 15 x 30 mm viereckigem Alu-Rohr. Rostfrei. Mit entspiegelte APET Frontplatten.

Gadeskilt af 32 mm alu snap-rammer, eloxeret aluprofil, bagplader i galvaniseret stål. Ben i 15 x 30 mm alu-firkantør. Rustfri. Med gerings-hjørner. Med refleksfri APET frontplader.



Logo plate and holder

Size	Art. no. logo plate	Art.no. holder
A2	11711 (46 x 22 cm)	11721
50 x 70 cm	11712 (54 x 22 cm)	11722
A1	11713 (64 x 22 cm)	11723
70 x 100 cm	11714	11724
A0	11715 (89 x 22 cm)	11725

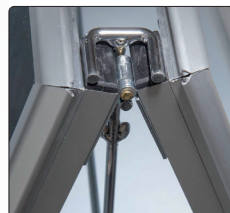
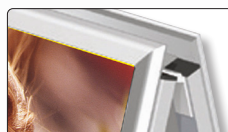
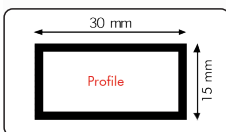


Brochure holder in steel

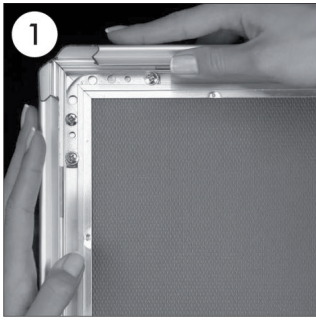
Size	Art. no.
For A4 brochures	6420

Acrylic brochure holders

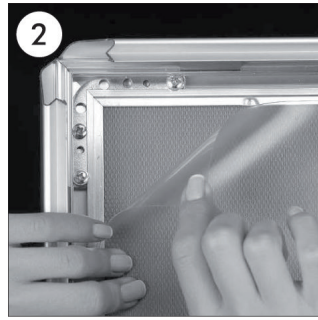
Size	Art. no.
For business cards	7510
For A6 brochures, vertical	2794
For A6 brochures, horizontal	2812
For M65 brochures	2797
For M65 brochures, deep	2813
For A5 brochures	2798
For A4 brochures	2799
For A4 brochures, deep	2796
Fitting for brochure box, silver	2795



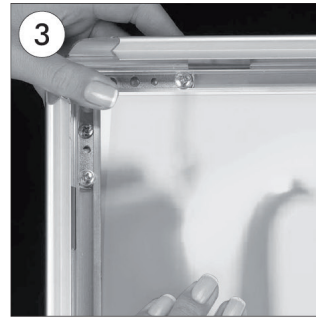
Model	Art.no.	Poster size	Colour	Total W x H	Header/logo	Package size and weight	Pallet size and quantity
117	5998	42 x 59,4 cm A2	Alu/silver	46,2 x 91 x 68 cm	46 x 22 cm	52 x 108 x 9 cm 6 kg	80 x 120 x 220 cm 29 pcs.
117	6000	50 x 70 cm	Alu/silver	54,2 x 91 x 68 cm	54 x 22 cm	63 x 110 x 9 cm 8 kg	80 x 120 x 220 cm 24 pcs.
117	6002	59,4 x 84,1 cm A1	Alu/silver	63,6 x 110 x 78 cm	64 x 22 cm	74 x 117 x 12 cm 10 kg	80 x 120 x 220 cm 25 pcs.
117	6001	70 x 100 cm	Alu/silver	74,2 x 120 x 83 cm	74 x 22 cm	80 x 139 x 9 cm 12 kg	81 x 140 x 220 cm 22 pcs.
117	5999	84,1 x 119 cm A0	Alu/silver	88,3 x 140 x 88 cm	89 x 22 cm	93 x 151 x 9 cm 18 kg	93 x 151 x 220 cm 14 pcs.
117	6006	50 x 70 cm	Black	54,2 x 91 x 68 cm	54 x 22 cm	63 x 110 x 9 cm 8 kg	80 x 120 x 220 cm 24 pcs.
117	6007	59,4 x 84,1 cm A1	Black	63,6 x 110 x 78 cm	64 x 22 cm	66 x 122 x 10 cm 9 kg	80 x 120 x 220 cm 22 pcs.
117	6008	70 x 100 cm	Black	74,2 x 120 x 83 cm	74 x 22 cm	80 x 139 x 9 cm 12 kg	81 x 140 x 220 cm 22 pcs.



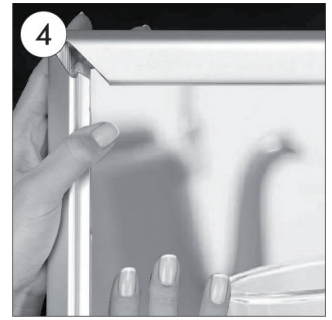
- GB** Open all profiles.
- DE** Alle Profile in der Pfeilrichtung öffnen.
- DK** Åben alle profiler.



- GB** Take-off the front panel.
- DE** Frontscheibe abheben.
- DK** Løft frontpladen



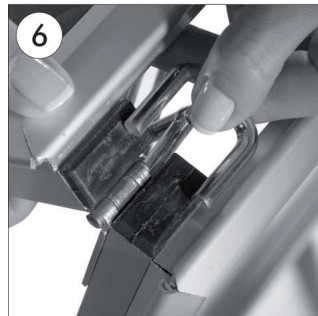
- GB** Place the poster under the front panel.
- DE** Poster unter Frontscheibe einlegen.
- DK** Læg plakaten ind under frontpladen.



- GB** After placing the cover back on the poster, close the profiles.
- DE** Frontscheibe einlegen und die Seitenprofile zuklappen.
- DK** Sæt frontpladen i og luk profilerne



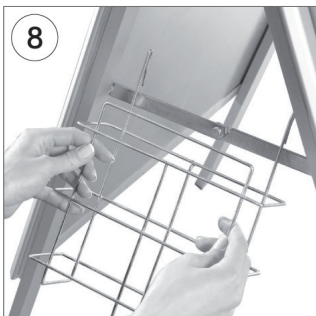
- GB** Place the wire header holder on the top of A Board between its hinges.
- DE** Den Aufsatzschildhalter von beiden Seiten leicht nach innen wölbend von oben nach unten durch den Kundenstopper durchschieben.
- DK** Placer logoholderen mellem de to plader i toppen.



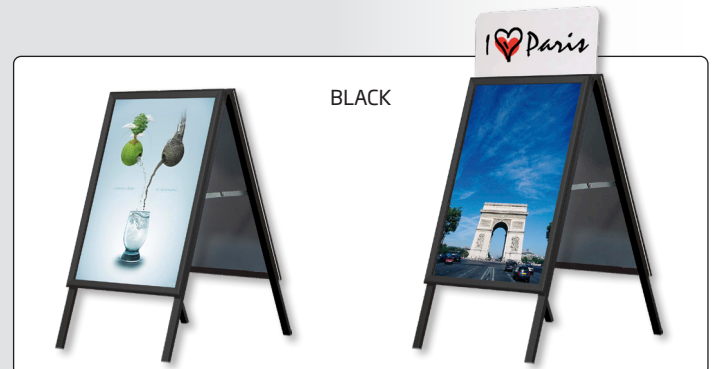
- GB** The edges of the holder fits with the hinges.
- DE** Die unteren Stifte an beiden Seiten des Aufsatzschildhalters sind unter dem Scharnier anzubringen.
- DK** Holderen anbringes som på billedet.



- GB** PVC foam header slides and fits inside the wire header holder.
- DE** Aufsatzschild ist inden Kanal an dem Aufsatzschildhalter zu schieben.
- DK** Logopladen føres ned i holderen.



- GB** Hang the basket on the scissors.
- DE** Prospektkorb ist an den Abstandhalter anzuhängen.
- DK** Hæng kurven på afstandholderne.



NOTE:

- GB** Wire header holder, PVC foam header and baskets are optional.
- DE** Wahlweise Aufsatz und Drahhalterung.
- DK** Kurv, logoplade og holder er tilbehør.