

Colour Production Printer

# RICOH Pro C5300s/C5310s

# RICOH

imagine. change.



Pro C5300s

65 ppm  
monochrome and full-colour

Pro C5310s

80 ppm  
monochrome and full-colour



**compliant.**  
 Your office environment is a more important factor to your employees. We'll make sure you're up to date with the latest information for your business with the latest from the Health Group specialist during our fully day, on-site event.

**CONTACT YOUR TRD SPECIALIST TO TAKE THE NEXT STEP**  
 1-800-456-7890

**THE JACKSON GROUP**  
 RESOURCE SOLUTIONS & CONSULTING

Keep up with the latest rules and regulations in Human Resources.



**THE JACKSON GROUP**  
 RESOURCE SOLUTIONS & CONSULTING

DO HOW... provides Talent Management solutions for your company's productivity.

**EVENT NOW ON**

**B2B HOME**



**THE MORI**  
 HOTELS + RESORTS

We are a values-driven company. One more... clients are happy to refer us is driven by key values: laboration, shipments, and day out.

**THE MORI**  
 HOTELS + RESORTS

We build, fix, and manage so you can focus. We're happy to step in and fix the problems that prevent you from focusing on what's most important to you as a leader. From your culture to employee engagement, The Jackson Group brings a passion for solving problems and positioning your organization for even greater success.

**THE MORI**  
 HOTELS + RESORTS

Let's start with a conversation. Call, email, or text us, whatever works best for you. Trust us, if it's a challenge related to managing or building talent, we've heard it before and are ready to help. Call The Jackson Group, and let's discuss how we can get started.

**THE MORI**  
 HOTELS + RESORTS

We're no strangers to Life Sciences talent. The O'Connor Group has helped client pharmaceutical, Biomedical, Bio-Device and Research fields attract a broad range of talent. We understand the life sciences and are confident in our ability to serve you.

**THE MORI**  
 HOTELS + RESORTS

Our process is buttoned up and comes to Professional Services. From leading legal firms to engineering enterprises, we have experience with clients in a variety of Professional Services organizations.

**THE MORI**  
 HOTELS + RESORTS

We have our Entrepreneurial Board and C-Level...

**THE MORI**  
 HOTELS + RESORTS

Only steps from the vibrant streets of the city, the spa at our four seasons... treatments with luxurious, natural products designed to invigorate the body and...

**THE MORI**  
 HOTELS + RESORTS

Our spa and retreat has partnered with Dr. James... rejuvenation, and therapies from the international... customized experiences. Soaring, spa... and nature. Understated and sophisticated... new York. From serene massages to patient... treatments that reflect the energy of the world's...

**THE MORI**  
 HOTELS + RESORTS

Our process is buttoned up and comes to Professional Services. From leading legal firms to engineering enterprises, we have experience with clients in a variety of Professional Services organizations.

**TAKE A JOURNEY WITH TEXTURE**



**JACKSON GROUP**  
 RESOURCE SOLUTIONS & CONSULTING

Pay COR Compensation Partner  
 13245  
 13245-7891  
 13245-7891  
 13245-7891

**THE JACKSON GROUP**  
 RESOURCE SOLUTIONS & CONSULTING



**THE MORI**  
 HOTELS + RESORTS

We are a values-driven company. One more... clients are happy to refer us is driven by key values: laboration, shipments, and day out.

**THE MORI**  
 HOTELS + RESORTS

We build, fix, and manage so you can focus. We're happy to step in and fix the problems that prevent you from focusing on what's most important to you as a leader. From your culture to employee engagement, The Jackson Group brings a passion for solving problems and positioning your organization for even greater success.

**THE MORI**  
 HOTELS + RESORTS

Let's start with a conversation. Call, email, or text us, whatever works best for you. Trust us, if it's a challenge related to managing or building talent, we've heard it before and are ready to help. Call The Jackson Group, and let's discuss how we can get started.

**THE MORI**  
 HOTELS + RESORTS

We're no strangers to Life Sciences talent. The O'Connor Group has helped client pharmaceutical, Biomedical, Bio-Device and Research fields attract a broad range of talent. We understand the life sciences and are confident in our ability to serve you.

**THE MORI**  
 HOTELS + RESORTS

Our process is buttoned up and comes to Professional Services. From leading legal firms to engineering enterprises, we have experience with clients in a variety of Professional Services organizations.



**Izzy's Bar & Grill**

JOIN US FOR GAME DAY BRUNCH!



**B2B HOME**

Spring Sales Event Now On  
 B2Bhome.com / SpringSale

**THE MORI**  
 HOTELS + RESORTS

We are a values-driven company. One more... clients are happy to refer us is driven by key values: laboration, shipments, and day out.

**THE MORI**  
 HOTELS + RESORTS

We build, fix, and manage so you can focus. We're happy to step in and fix the problems that prevent you from focusing on what's most important to you as a leader. From your culture to employee engagement, The Jackson Group brings a passion for solving problems and positioning your organization for even greater success.

**THE MORI**  
 HOTELS + RESORTS

Let's start with a conversation. Call, email, or text us, whatever works best for you. Trust us, if it's a challenge related to managing or building talent, we've heard it before and are ready to help. Call The Jackson Group, and let's discuss how we can get started.

**THE MORI**  
 HOTELS + RESORTS

We're no strangers to Life Sciences talent. The O'Connor Group has helped client pharmaceutical, Biomedical, Bio-Device and Research fields attract a broad range of talent. We understand the life sciences and are confident in our ability to serve you.

**THE MORI**  
 HOTELS + RESORTS

Our process is buttoned up and comes to Professional Services. From leading legal firms to engineering enterprises, we have experience with clients in a variety of Professional Services organizations.

**Izzy's Bar & Grill**

**Appetizers**

4 SOUP \$4 topped with...

BBLE SOUP \$4 baby vegetables.

SHRIMP TAIL \$10 to shrimp with cocktail sauce.

QUESADILLAS \$9 flour breast pan seared in a flour tortilla with jack cheese, tomatoes, onions, and served with salsa, sour cream, and jalapeno.

LAMARI \$10 marinated, beer battered, fried onion rings, served with marinara sauce.

SKINS \$8 2 with Cheddar cheese, sour cream, and scallions.

ED MUSHROOMS \$10 temp crabmeat filled mushroom.

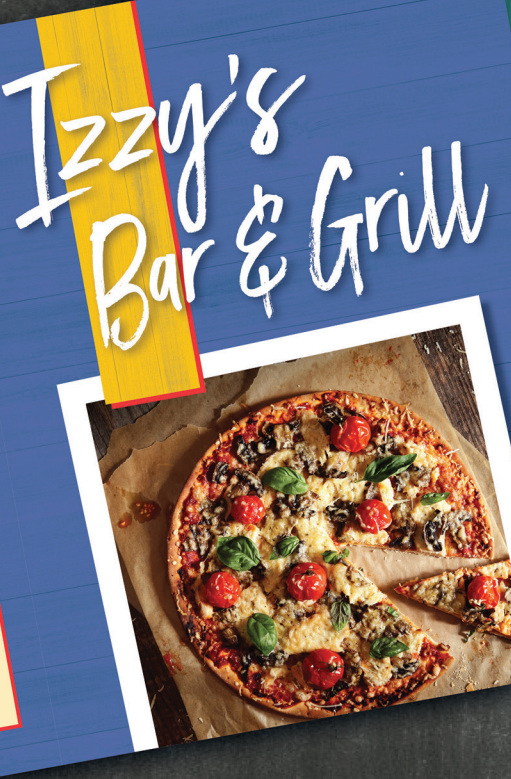
4 PETALS \$7 battered onion petals, fried golden and served with a zesty Texas sauce.

**Salads**

CLASSIC CAESAR SALAD \$9 romaine lettuce tossed in our homemade dressing, with homemade croutons (with chicken add \$3).

BLACK AND BLEU SALAD \$12 tender slices of blackened steak tossed with romaine hearts and mixed greens, tomatoes, carrots, bacon, and bleu cheese crumbles. Served with bleu cheese dressing.

COBB SALAD \$12 Mixed greens topped with grilled chicken, tomatoes, hard-boiled eggs, black olives, avocado, bacon, bleu cheese crumbles, and scallions.



**THE MORI**  
 HOTELS + RESORTS

Our process is buttoned up and comes to Professional Services. From leading legal firms to engineering enterprises, we have experience with clients in a variety of Professional Services organizations.

**THE MORI**  
 HOTELS + RESORTS

Our process is buttoned up and comes to Professional Services. From leading legal firms to engineering enterprises, we have experience with clients in a variety of Professional Services organizations.

**THE COAST IS CLEAR**

Please make up the room.



# The quality and reliability you need with the size and affordability you want.

The RICOH Pro C5300s/C5310s, built as a right-sized solution, combines high-quality colour, exceptional media handling, powerful performance, and a range of finishing options. With professional-grade speeds and advanced technologies, they deliver a total package. And it all comes in a compact footprint.

## Capture and capitalize on more opportunities.

- High productivity with full-colour output up to 80 ppm
- Exceptional image quality with VCSEL Laser resolutions up to 2400 × 4800 dpi
- Best-in-class media support for specialty stocks, long sheets and heavier weights
- Accurate registration and colour consistency for higher-quality jobs
- Automatic duplexing up to 330mm × 487mm and weights to 360 gsm
- Intuitive user controls with a 10" Smart Operation Panel
- Expansive selection of finishing options for greater flexibility
- Choice of Ricoh and EFI Controllers to match workflows
- Integrate with Ricoh software solutions to create efficiencies that drive measurable results — from prepress to job and device management





# The right features. The right size. In the right place.

## Marketing Agencies

Set your business up for more wins with a compact, high-caliber colour printer that's easy-to-use and requires minimal maintenance.

- Always be ready to deliver professional presentations that show off the genius of your ideas with vibrant colour and pristine image quality.
- Give teams the ability to explore their creativity and fully execute concepts across more media types.
- Produce compelling materials for client approval and provide your print service provider with proofs to ensure your vision is produced as intended.
- Benefit from the convenience of having professional finishing in a streamlined design.

## In-plants

Keep more work in-house and remain a vital resource with an affordable system that enhances your productivity and creates efficiencies.

- Exceed customer expectations with precise registration and the ability to match more colours.
- Offer more applications with support for a wide range of media including specialty stocks, synthetics, envelopes and long sheet options.
- Create professionally-finished booklets, course guides, marketing materials and more with tab inserts and thick covers.





## Commercial Printers

Offload short-run jobs from high-volume systems to balance workload and increase your margins.

- Run client proofs for specialty jobs that require colour matching approval.
- Gain a high-quality, dependable system to handle rush jobs and workload spikes.
- Print on-demand work such as flyers, inserts and postcards on coated media and heavy weight stocks.

## Franchise/Print-for-pay:

Grow your business with a dedicated colour printer that easily manages an expansive range of media.

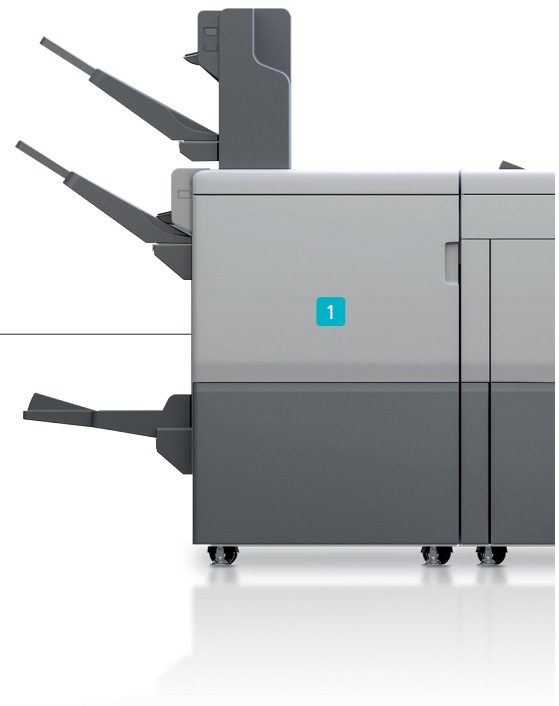
- Reliable performance and intuitive controls make it easy for operators of all levels to run the system.
- Command premium prices with vibrant colour, precise registration and high-quality image reproduction.
- Offer customers more unique options with specialty stocks and produce high-value applications on demand with long sheet media options.

The success of your business depends on technology that can help you achieve your productivity and profit goals. And you require high-quality output that meets the demands of your most important clients.

The RICOH Pro C5300s/C5310s delivers on both — brilliantly.



Configure a true end-to-end solution with **robust finishing options and software** to match your workflow.



## Powerful controllers to manage your workflow.

The RICOH Pro C5300s/C5310s comes standard with Ricoh's versatile GW controller and offers two unique EFI options. The embedded Fiery E-27B provides robust job and colour management, while the server based Fiery E-47B provides even more power for a higher-level of performance and control over job processing — from make-ready to delivery.

- 1 Produce full-colour booklets in-house and in-line:** Choose the 3,500-Sheet SR5120 Booklet Finisher to create saddle-stitch booklets up to 30 sheets/120 pages. For fully automated wire-bound booklets choose the GBC StreamWire.
- 2 Keep jobs running continually:** With the High Capacity Stacker SK5040 you can stack up to 5,000 sheets and easily move it with a Roll-Away Cart.
- 3 Eliminate offline manual insertion:** Add a one-tray or two-tray Cover Interposer to easily feed preprinted inserts and covers into your workflow.
- 4 Minimise waste:** Reduce toner adhesion on stacked, coated paper when you use the optional Buffer Pass Unit to cool media before sending it to the finishing unit.





**5 Keep jobs flowing through production:** Install the optional Decurl Unit to minimize paper curling and improve stacking.

**6 Streamline information capture:** Copy and scan jobs up to 240 images per minute using the standard 220-Sheet Document Feeder, which scans duplex colour in a single pass.

**7 Be known for superb reproduction quality:** Deliver brilliant colour and smooth, subtle gradations with Vertical Cavity Surface Emitting Laser (VCSEL) technology and PxP-EQ toner technology.

**8 Refill paper without downtime:** Rely on the Active Tray Indicators to tell you which tray is in use so you can fill other trays while the system is running.

**9 Know immediately when a system needs attention:** View the Status Light Pole from anywhere in the room.

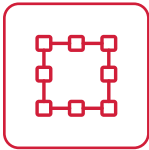
**10 Speed through job instructions:** Complete tasks quickly and easily using the 10" Smart Operation Panel with tablet-like features.

**11 Accurate front-to-back registration:** The Bridge Unit BU5030, which is required with the Vacuum Feed LCIT, ensures precise registration in this compact footprint.

**12 Produce long runs:** The Vacuum Feed LCIT RT5120 adds 4,400-sheets of media with support for coated and heavy stocks up to 360 gsm, in sizes up to 330mm x 487mm.



# Innovative technology. Superior colour. **High productivity.**



## **An outstanding design that delivers on every level.**

**Developed to be a superior product in a compact footprint, without compromise.**

- Smart features include the 10" Smart Operation Panel that guides an intuitive user experience.
- Operator Replaceable Units (ORUs) allow you to execute routine maintenance on your schedule, ensuring the system is up and running when you need it most.
- Active tray indicator lights allow media to be loaded on-the-fly, increasing efficiency for longer runs and fewer interruptions.



## **The power to help your business do more.**

**Gain a competitive edge with features that help reduce labor intensive set-up, minimize wasted output and achieve repeatable, high-quality results.**

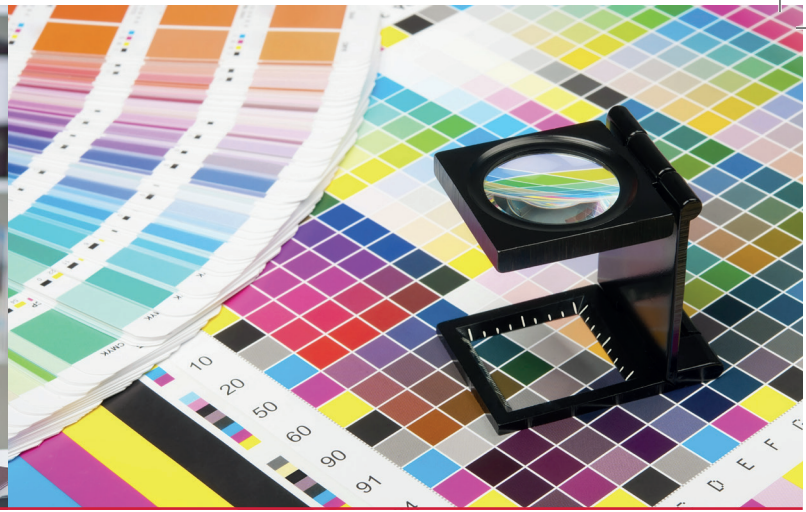
- Six media pick points offer the flexibility to boost production speeds with minimal intervention — delivering exceptional output on time and on budget.
- Built-in sensors drive automation for precise front-to-back registration, producing high-quality results when duplexing business cards, direct mail, books, brochures and invitations.
- End-to-end solutions for Web-to-Print and variable data, allow you to take on more jobs and drive higher response rates for your customers.



## **True-to-life colour that meets customer needs.**

**Benefit from the same imaging technologies that drive Ricoh's larger volume award-winning systems and deliver incredible details that make an impact.**

- Ricoh's Vertical Cavity Surface Emitting Laser (VCSEL) technology delivers the industry's highest pixel density (4800 dpi) for the most vivid images and crisp text with shape lines.
- Parallel calibration delivers high-image quality and consistent colour page after page so you can confidently match brand colours and satisfy the most discerning customer.
- Proprietary PxP-EQ Toner enhances the smooth appearance of images on textured stocks and gloss media.



## Exceptional paper-handling and professional finishing.

**Produce high-value applications and bring previously outsourced jobs in-house.**

- End-to-end finishing options include traditional stapling and hole-punching to GBC punching, inline multi-folding, and cover interposers that permit pre-printed inserts to be inserted into the workflow.
- Raise the bar with the new SR5120 Booklet Finisher for saddle-stitch books, up to 120 pages, with heavy weight covers up to 350 gsm.
- For workflows that rely on coated media, the Vacuum Feed LCIT provides enhanced support with two multi-tray feeds for longer runs.



## More media. More applications. More profit.

**Expand your customer base with eye-catching output, no matter what industry you serve.**

- Streamline job setup and achieve optimal output with 1,000 preset or custom profiles in an intuitive Paper Library.
- Produce impressive posters, printed tab inserts, book wraps, panel mailers, full-size tri-fold brochures and more.
- Create a range of applications with extensive media choices from light-weight gloss sheets to the most interesting synthetic and textured stocks.



## A total solution with software and services.

**Tap into Ricoh's expertise to realize the full potential of your RICOH Pro C5300s/C5310s. Our experienced team will assess your needs and recommend the solutions to meet your goals.**

- Rely on a partnership that gives you 24/7 support and one of largest service organisations dedicated 100% to production.
- Increase the speed and accuracy of pre-press with TotalFlow® Prep and automate your production printing with TotalFlow® BatchBuilder, a solution that batches jobs based on attributes.



# RICOH Pro C5300s/C5310s

## System specifications

### Specifications

Standard Modes	Copy/Print/Scan
Print/Copy Process	4 drum dry electrostatic transfer system with internal transfer belt
Fusing	Oil-less belt fusing method
Toner	Color PXP-EQ Toner
Paper Registration	Sensor and Optional Mechanical Registration
Document Feeder	220-Sheet ADF with single-pass colour duplex scanning at up to 240 ipm
Operation Panel	Full Colour 10.1" Smart Operation Panel
Output Speed (A4)	Pro C5310S: 80 ppm (52 - 256 gsm) 56 ppm (256.1 - 360 gsm) Pro C5300S: 65 ppm (52 - 256 gsm) 50 ppm (256.1 - 360 gsm)
First Copy Output Time	Pro C5310S: (FC) Less than 9.6 seconds (B&W) Less than 8.1 sec Pro C5300S: (FC) Less than 11 sec (B&W) Less than 9.2 sec
Max Monthly Volume	150K
Duty Cycle	450K
Resolution	VCSEL: 2400 x 4800 dpi Print: 1200 x 4800 dpi Copy: 600dpi Scan: 600dpi
Paper Capacity	Tray 1: 2,500 sheets (1,250 x 2) Trays 2 - 3: 550 x 2 Bypass Tray: 250 sheets
Total Standard Paper Capacity	3,850 sheets
Total Max Paper Capacity	8,550 sheets
Paper Size	Tray 1: 210 - 305mm (W) x 210 - 439mm (L) Trays 2 - 3: 100 - 330.2mm (W) x 139.7 - 487.7mm (L) Bypass: 90 - 330.2mm (W) x 139.7 - 1260mm (L), Envelopes
Paper Weight	Trays 1 - 3: 52 - 300 gsm Bypass Tray: 52 - 360 gsm Auto Duplex: 360 gsm 52 - 360 gsm
Maximum Printable Area	323 x 480mm
Warm-up Time	Less than 120 seconds
Max. Power Consumption	3,840 W or less
Power Requirements	208 - 240V, 16A, 60 Hz (dedicated)
Dimensions (W x D x H)	799 x 880 x 1648mm (incl. ADF and Status Light Pole)
Weight	Less than 262kg

### Printer Controller

<b>EFI Colour Controller E-47B</b>	
Fiery System Version	Fiery FS400 Pro
Configuration	Server Type
Memory	8GB RAM
CPU	Intel Core i5-6500 processor (3.2GHz up to 3.6GHz with Turbo)
HDD	1TB SATA
Operating System	Windows 10 IoT Enterprise 2019 LTSC

<b>EFI Color Controller E-27B</b>	
Fiery System Version	Fiery FS400 Pro
Configuration	Embedded Type
Memory	4GB
CPU	Intel Pentium processor G4400 3.3GHz
HDD	500GB
Operating System	Linux

### Accessories

<b>A4/LT Large Capacity Input Tray (LCIT RT4060)</b>	
Paper Capacity	4,400 sheets
Paper Size	210 x 297mm
Paper Weight	52 - 300 gsm
Dimensions (W x D x H)	352 x 540 x 625mm
Weight	20kg

<b>A3/DLT Large Capacity Input Tray (LCIT RT5140)</b>	
Paper Capacity	2,200 sheets
Paper Size	Up to 330 x 487mm
Paper Weight	52 - 300 gsm
Dimensions (W x D x H)	869 x 730 x 658mm
Weight	83kg

<b>Banner Sheet Guide Tray for A3 LCIT Type 56</b>	
Paper Capacity	250 sheets
Paper Size	Up to 330 x 700mm
Paper Weight	52 - 300 gsm

<b>Vacuum Feed Large Capacity Input Tray (LCIT RT5120)</b>	
Paper Capacity	4,400 sheets (2,200 sheets x 2 Trays)
Paper Size	Up to 330 x 487mm
Paper Weight	52 - 360 gsm
Dimensions (W x D x H)	1054 x 730 x 1000mm
Weight	230kg
Carbonless Paper supported	with optional Carbonless Paper Unit Type S13

<b>Bridge Unit BU5030 (Required for the LCIT RT5120)</b>	
Mechanical Registration included	
Dimensions (W x D x H)	225 x 730 x 1000mm
Weight	41kg

<b>Vacuum Feed Banner Sheet Tray Type 59</b>	
Paper Capacity	730 sheets
Paper Size	Up to 330 x 700mm
Paper Weight	52 - 360 gsm

### Multi Bypass Tray (BY5020)

Paper Capacity	550 sheets
Paper Size	Up to 330 x 487mm
Maximum Paper size	Extends up to 330 x 700mm by adding the optional Multi Bypass Oversize Sheet Tray Type S9
Paper Weight	52 - 216 gsm

<b>Cover Interposer (CI5050)</b>	
Paper Capacity	200 sheets (200 sheets x 1 Tray)
Paper Size	Up to 297 x 432mm
Paper Weight	Cover 64 - 216 gsm
Dimensions (W x D x H)	500 x 600 x 600mm
Weight	12kg

<b>Cover Interposer (CI5040)</b>	
Paper Capacity	400 sheets (200 sheets x 2 Trays)
Paper Size	Up to 330 x 487mm
Paper Weight	Cover 52 - 350 gsm
Air Assist	Supported
Double Feed Detection	Supported
Dimensions (W x D x H)	740 x 730 x 1290mm
Weight	50kg

### Multi Folding Unit FD5020

Folding Type	Single Sheet Mode: Z-Fold, Half-Fold/Print inside, Half-Fold/Print outside, Fold-in/Print inside, Fold-in/Print outside, Fold-out, Double Parallel/Print inside, Double Parallel/Print outside, Gate-Fold/Print inside, Gate-Fold/Print outside
Paper Size	Multiple Sheets Mode: Half-Fold/Print inside, Half-Fold/Print outside, Fold-in/Print inside, Fold-in/Print outside, Fold-out Single Sheet Mode: Z folding: 210 x 297mm - 297 x 420mm; Half folding: 210 x 297mm - 330 x 487.7mm; folding: 210 x 297mm - 297 x 420mm; Double Parallel folding: 210 x 297mm - 297 x 420mm; Gate folding: 210 x 297mm - 297 x 420mm

Paper Weight	Multiple Sheets Mode: Half folding: 210 x 297mm - 330 x 487.7mm; Fold-in: 210 x 297mm - 297 x 420mm; Fold-out: 210 x 297mm - 210 x 356mm Single Sheet Mode: 64 - 105 gsm
Dimensions (W x D x H)	Multiple Sheets Mode: 64 - 80 gsm 470 x 980 x 730mm
Weight	92kg

### High Capacity Stacker (SK5040)

Paper Capacity	5,000 sheets
Proof tray	Additional 250 sheets
Paper Weight	52 - 360 gsm
Rollaway Cart	Standard and Optional additional carts available
Dimensions (W x D x H)	900 x 730 x 1000mm
Weight	Stacker:120kg; Rollaway cart: 15kg



#### Copy Tray Type M42

Paper Capacity	500 sheets
Paper Size	Up to 330 x 487mm
Paper Weight	52 – 360 gsm
Dimensions (W x D x H)	350 x 500 x 170mm
Weight	2.2kg

#### 3,000-Sheet Finisher with 65-Sheet Stapler (SR5090)

Shift Tray	
Paper Capacity	3,000 sheets
Paper Weight	Cover 52 – 360 gsm
Proof Tray	
Paper Capacity	250 sheets
Paper Weight	Cover 52 – 216 gsm
Paper Size	148 x 210mm – 330 x 487.7mm
Output Jogger	Optional
Cooling Fan	Optional
Punch 2/4 hole	Optional
Staple	
Paper Size	B5-A3 SEF to 65 sheets
Staple Paper Weight	Up to 105 gsm
Staple Position	Top, Bottom, 2 Staples, Top Slant
Dimensions (W x D x H)	1113 x 730 x 1490mm
Weight	160kg

#### 2,000-Sheet Booklet Finisher with 65-Sheet Stapler (SR5100)

Shift Tray	
Paper Capacity	2,000 sheets
Paper Weight	Cover 52 – 360 gsm
Proof Tray	
Paper Capacity	250 sheets
Paper Weight	Cover 52 – 216 gsm
Output Jogger	Optional
Cooling Fan	Optional
Punch 2/4 hole	Optional
Staple	
Paper	B5-A3 SEF to 65 sheets
Paper	Weight Up to 105 gsm
Position	Top, Bottom, 2 Staples, Top Slant
<b>Saddle Stitch Staple</b>	
Paper Size	210 x 297mm – 330 x 420mm
Paper Weight	64-80 gsm – up to 20 sheets
Position	2 at center
Dimensions (W x D x H)	657 x 730 x 980mm
Weight	53kg

#### 4,500-Sheet Finisher with 100-Sheet Stapler (SR5110)

Paper Capacity	
Lower Shift Tray	3,500 sheets
Upper Shift Tray	1,000 sheets
Paper Weight	Cover 52 – 360 gsm
Punch 2/4 hole	Optional
Dimensions (W x D x H)	1113 x 730 x 1490mm
Weight	135kg

#### 3,500-Sheet Booklet Finisher with 100-Sheet Stapler (SR5120)

Paper Capacity	
Lower Shift Tray	2,500 sheets
Upper Shift Tray	1,000 sheets
Paper Weight	Cover 52 – 360 gsm
Punch 2/3 hole	Optional
Saddle Stitch Staple	Cover 52 – 350 gsm
Paper Size	182 x 257mm x 330 x 487.7mm
Paper Weight	52 – 80 gsm up to 30 sheets / 120 pages
Dimensions (W x D x H)	1113 x 730 x 1490mm
Weight	160kg

#### Booklet Trimmer (TR5050)

Trimming Type	One Side Edge
Trimming Capacity	Up to 30 stapled and folded sheets / 120 pages (80 gsm)
Paper Size	182 x 257mm x 330 x 487.7mm
Stack Capacity	Up to 60 sets
Limitless Stack	Supported
Dimensions (W x D x H)	1115 x 592 x 556mm
Weight	75.29kg

#### GBC StreamPunch Ultra

Paper Sizes	A4 LEF, SEF, SEF Double Punch A5 LEF A3 SEF SEF Double Punch SRA3 SEF SEF Double Punc SRA4 LEF, SEF, SEF Double Punch
Paper Weight	Cover 75 – 300 gsm Coated 120 – 300 gsm
Tab Punching	Supported
"Two-Up" Punching	Supported
Dimensions (W x D x H)	445 x 729 x 1001mm
Weight	100kg

#### GBC StreamWire (GBC StreamPunch Ultra is required)

Paper Sizes	210 x 297mm (LEF)
Paper Weight	Cover 75 – 300 gsm
Number of Loops	210 x 297mm (LEF) – 32 loops
StreamWire Supply	Black, White, or Silver
Tab Stack	Up to 30, 50, 60, 70, or 80 Sheets
Dimensions (W x D x H)	Supported 864 x 965 x 864mm
Weight	227kg

#### Plockmatic Square Back Trimmer

Trimming Type	One Side Edge
Three side Trimming	Manual feeding via Operator assisted process
Folding Type	Square Back Fold
Trimming Capacity	Up to 30 stapled and folded sheets / 120 pages (80 gsm)
Paper Size	182 x 257mm – 330 x 487.7mm
Dimensions (W x D x H)	1760 x 660 x 1064mm
Weight	178kg

#### Plockmatic PBM350e Booklet Maker

Paper Size	210 x 297mm – 297 x 420mm
Paper Weight	Cover 64 – 300 gsm
Set Size	2 – 35 sheets – 80 gsm 2 – 50 sheets – 80 gsm (PBM500 upgrade kit needed)
Dimensions (W x D x H)	1420 x 899 x 701mm
Weight	135kg
Optional	Trim Module, Book Fold Module, Cover Feeder, Rotate Crease Trimmer

#### Additional Accessories

Decurl Unit DU5080, Buffer Pass Unit Type S9, Bridge Unit BU5020, Media Identification Unit, PostScript<sup>3</sup> Unit Type M42, IPDS Unit Type M42, VM Card Type P18, OCR Unit Type M13

#### Consumables

CMY Toner Yield	26K prints/bottle*
K Toner Yield	31K prints/bottle*
Waste Toner Bottle Yield	110K prints/bottle*

\*Based on 8.75% coverage (A4)

#### Workflow Solutions Supported

Ricoh Streamline NX, Ricoh Global Scan NX, Ricoh Integrated Cloud Environment, Ricoh Smart Integration, RICOH ProcessDirector™, RICOH TotalFlow Prep, RICOH TotalFlow Production Manager, RICOH TotalFlow BatchBuilder, RICOH @Remote, EFI® DigitalStoreFront™, CGS/ORIS Lynx & Evaluate, EFI Color Profiler Suite, EFI Fiery™ Graphic Arts Pro, EFI Fiery ColorRight, EFI Fiery Automation, DirectSmile™, EFI Fiery Central, Objectif Lune

Specifications subject to change without notice.  
Contact Ricoh for a list of certified media.



**RICOH**  
imagine. change.

[www.ricoh-europe.com](http://www.ricoh-europe.com)

Ricoh Europe Plc, 20 Triton St, London NW1 3BF  
RicoH® and the RicoH Logo are registered trademarks of Ricoh Company, Ltd. All other trademarks are the property of their respective owners. ©2020 Ricoh Europe Plc. All Rights Reserved.  
The content of this document, and the appearance, features and specifications of Ricoh products and services are subject to change from time to time without notice. Products are shown with optional features. While care has been taken to ensure the accuracy of this information, Ricoh makes no representation or warranties about the accuracy, completeness or adequacy of the information contained herein, and shall not be liable for any errors or omissions in these materials. Actual results will vary depending upon use of the products and services, and the conditions and factors affecting performance. The only warranties for Ricoh products and services are as set forth in the express warranty statements accompanying them.

**R4127**